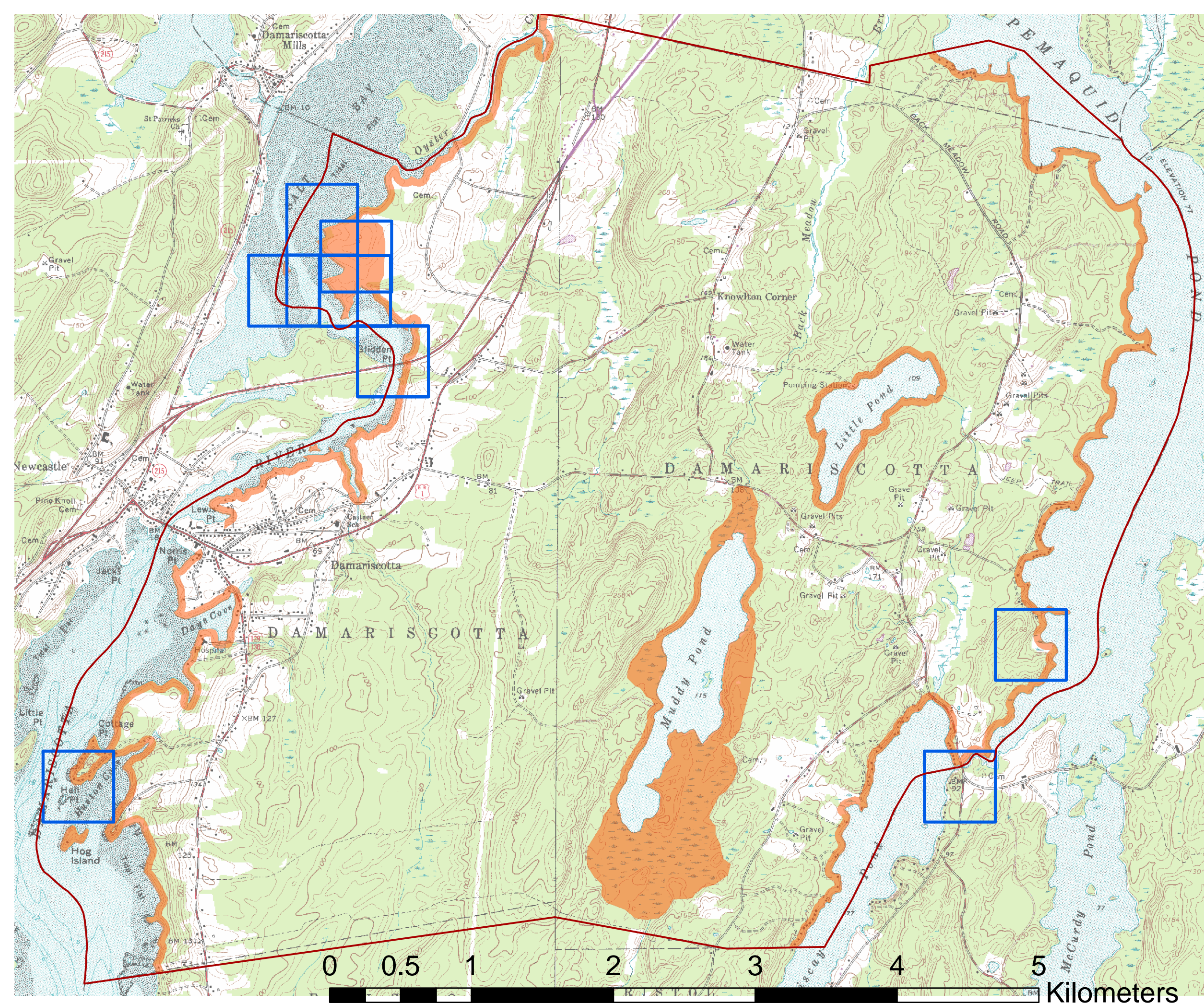



**Known Prehistoric
Archaeological Sites*
and Areas Sensitive for
Prehistoric Archaeology* in**


Damariscotta

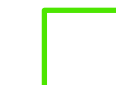
**information provided by
Maine Historic Preservation
Commission
March 2010**


*dated material subject to future revision
map 1/1



 Areas sensitive for prehistoric archaeology

 1/2 k square intersecting a known prehistoric archaeological site.

 1/2 k square intersecting a known historic archaeological site.

 1/2 k square intersecting a known historic archaeological site with a good estimated location.