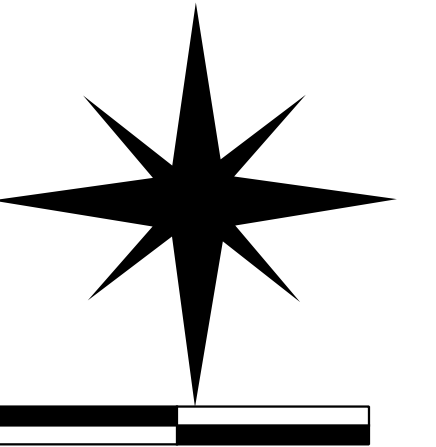


Property Map Damariscotta Maine



0 500 1,000

Scale:
1" = 500 ft.

Legend

- Powerline
- Sub-parcel lines
- Easements
- NG911 Roads
- Secondary
- Local
- Private
- Paper Street
- Streams
- Parcels shown on this Tax Map
- Parcels shown on other Tax Maps
- Wetlands
- Forested Wetlands
- Ponds
- Road ROW
- Tidal
- Cemeteries

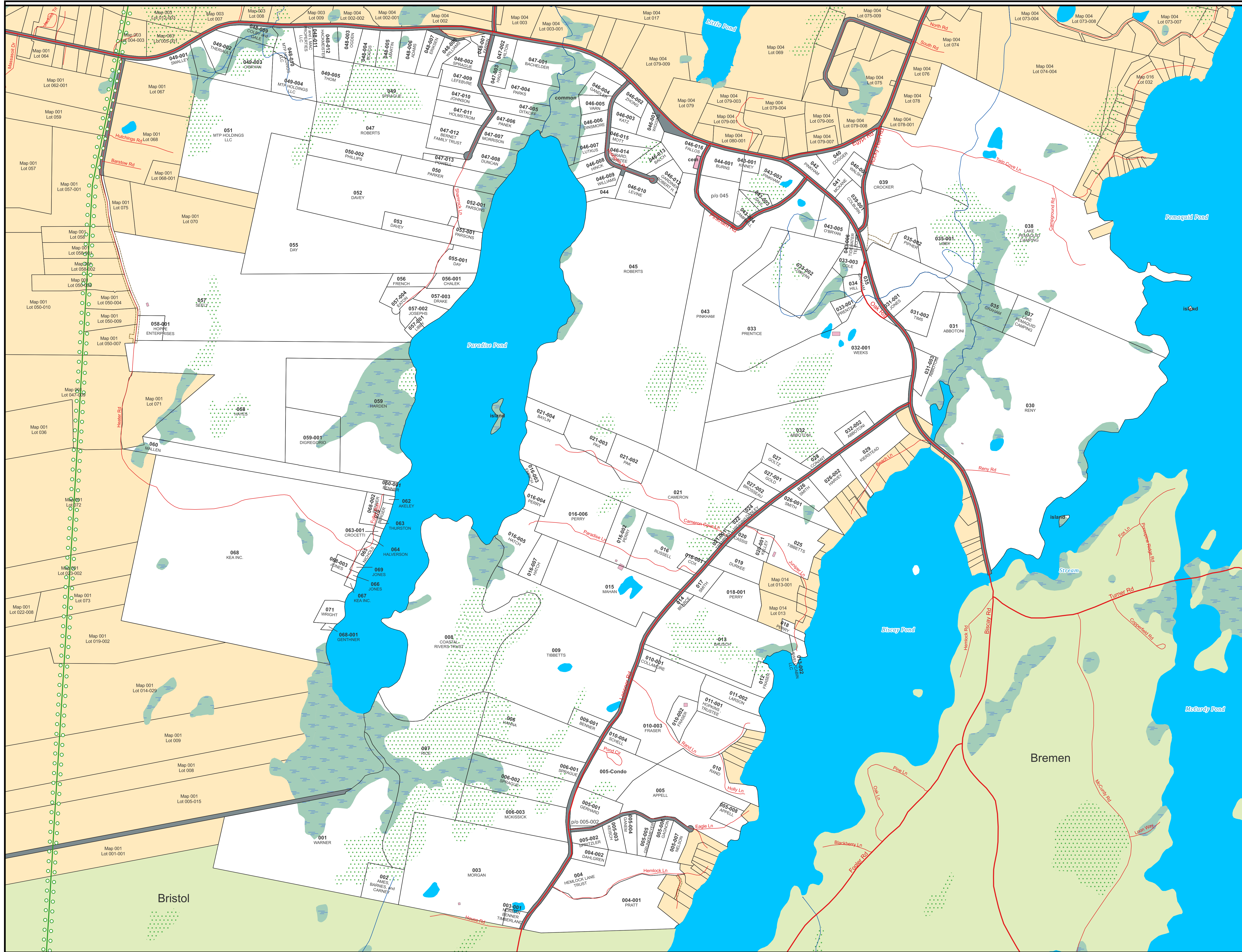
Source Documents:
Damariscotta Property Maps by James W. Sewall Co. and updated through 2009 by Maine Coast Surveying.
Digital Property Maps prepared by Maine Coast Surveying in 2009 and updated through 2016.
Digital Property Map updates by Maine Coast Surveying & Flood Consulting 2017 & 2018.
Digital Property Map updates by Roderick H. Craib, Jr. (PLS 1191) 2019 & 2022.
Maine Office of Geographic Information Systems digital data layers include:
High resolution digital orthophotographs produced from aerial photos collected in the Spring of 2013 and 2018.
Road Type contains Next Generation 9-1-1 road centerline and road name data last updated August 7, 2023.
Streams depicts single line streams of Maine from USGS 1:24,000 scale quadrangles.
Wetlands (NWI) contains USFW National Wetland Inventory polygon data for Maine at 1:24,000 scale.
The tidal shore was developed from two foot contours derived from 2010 -2011 Lidar data courtesy of the USGS and the Maine Office of GIS.
This revision is based only on plans, deeds and other data supplied by the Town of Damariscotta.
Owner's names may be abbreviated, simplified, or omitted to save space. See Damariscotta Tax Records for complete names.
The dimensions and areas (if shown) were derived from this map for assessment purposes only. They may be different from previous tax maps, deeds, or surveys.

For Assessment Purposes Only
Not a Boundary Survey
Not To Be Used For
Conveyances

prepared by:
Roderick H. Craib, Jr.
P.O. Box 101
167 Fox Hill Road
Walpole, ME 04573

Revisions dated December 10, 2023
based on Ownership on April 1, 2023

Map 002



Bristol

Bremen